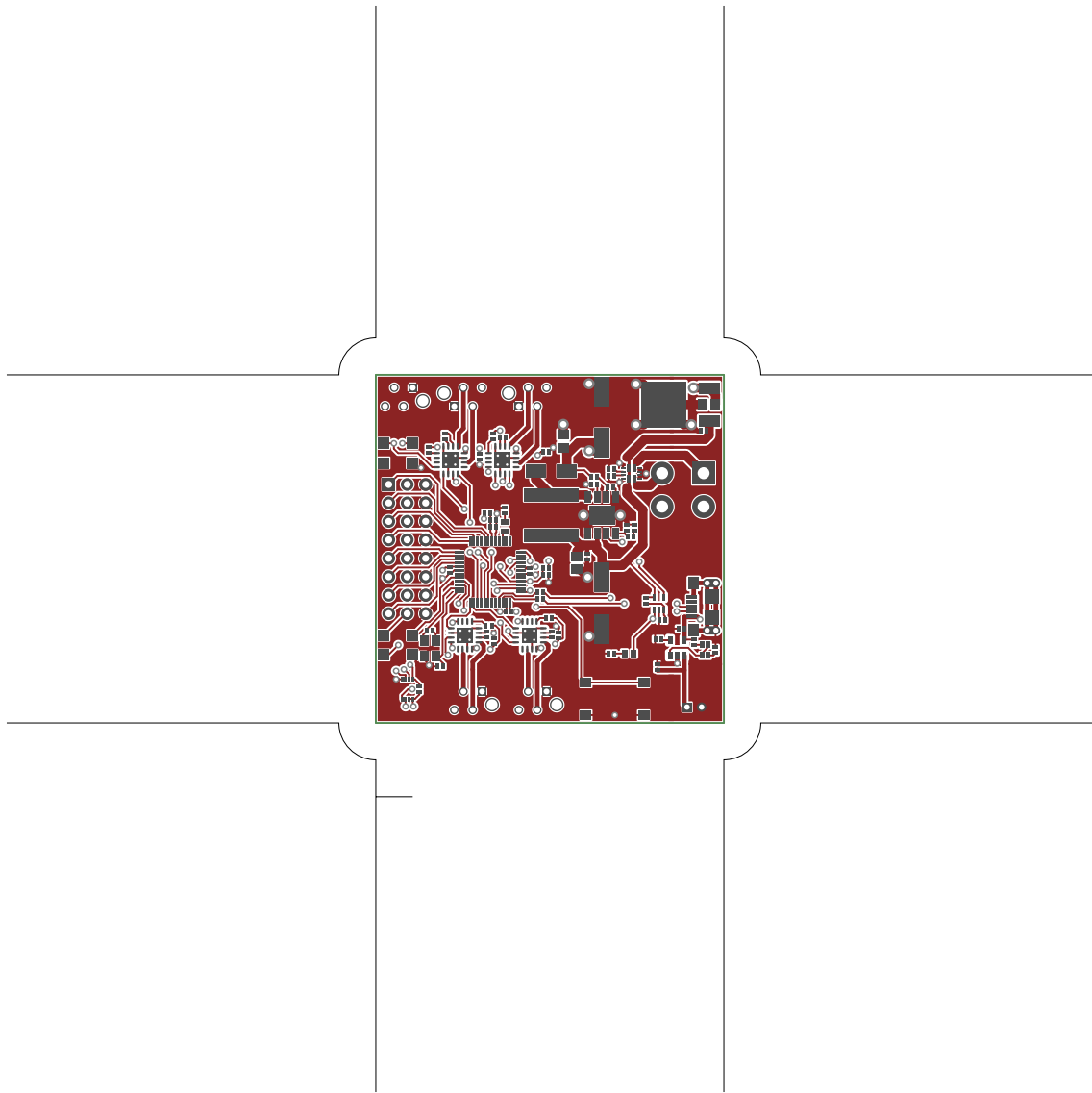
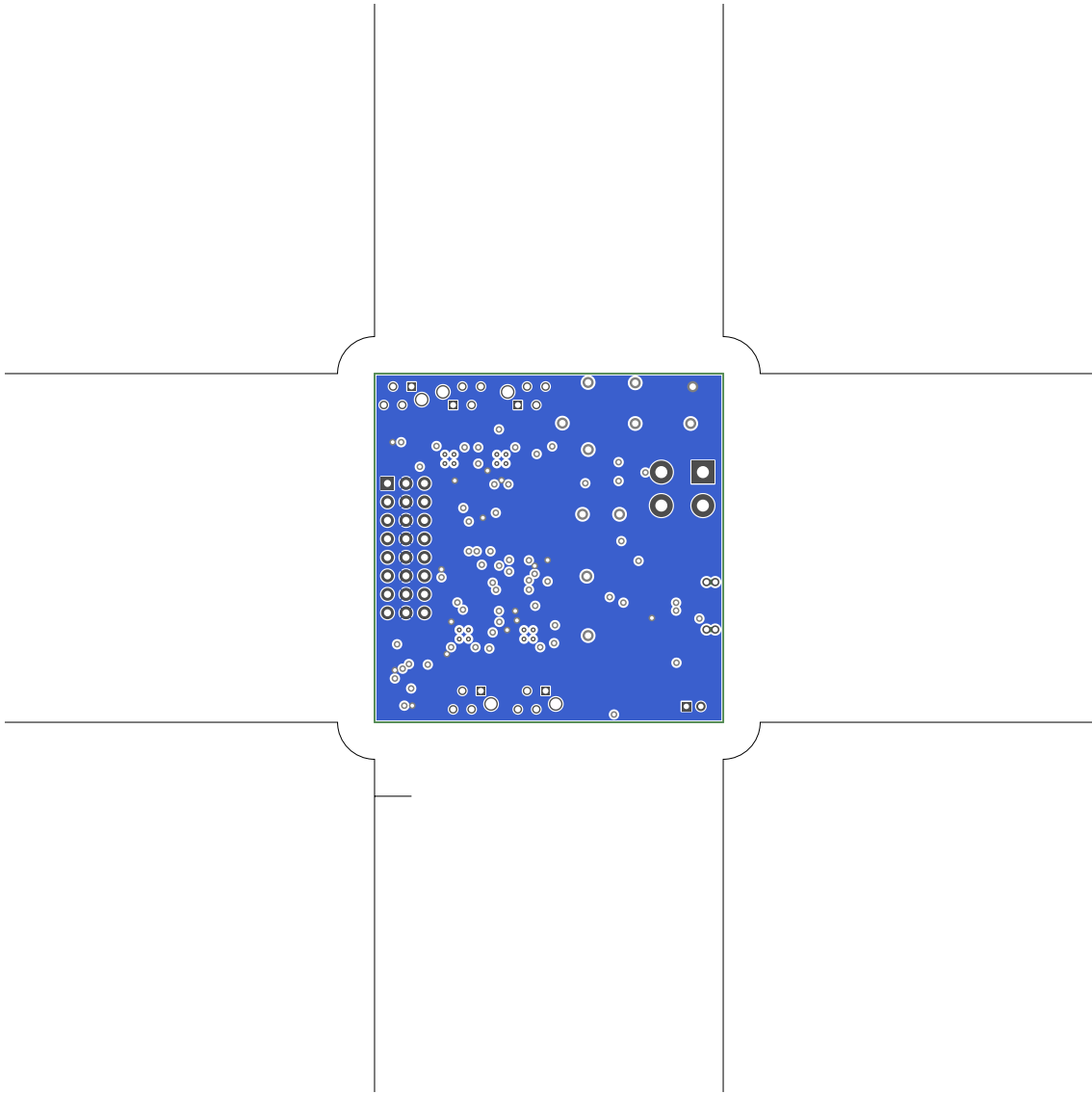


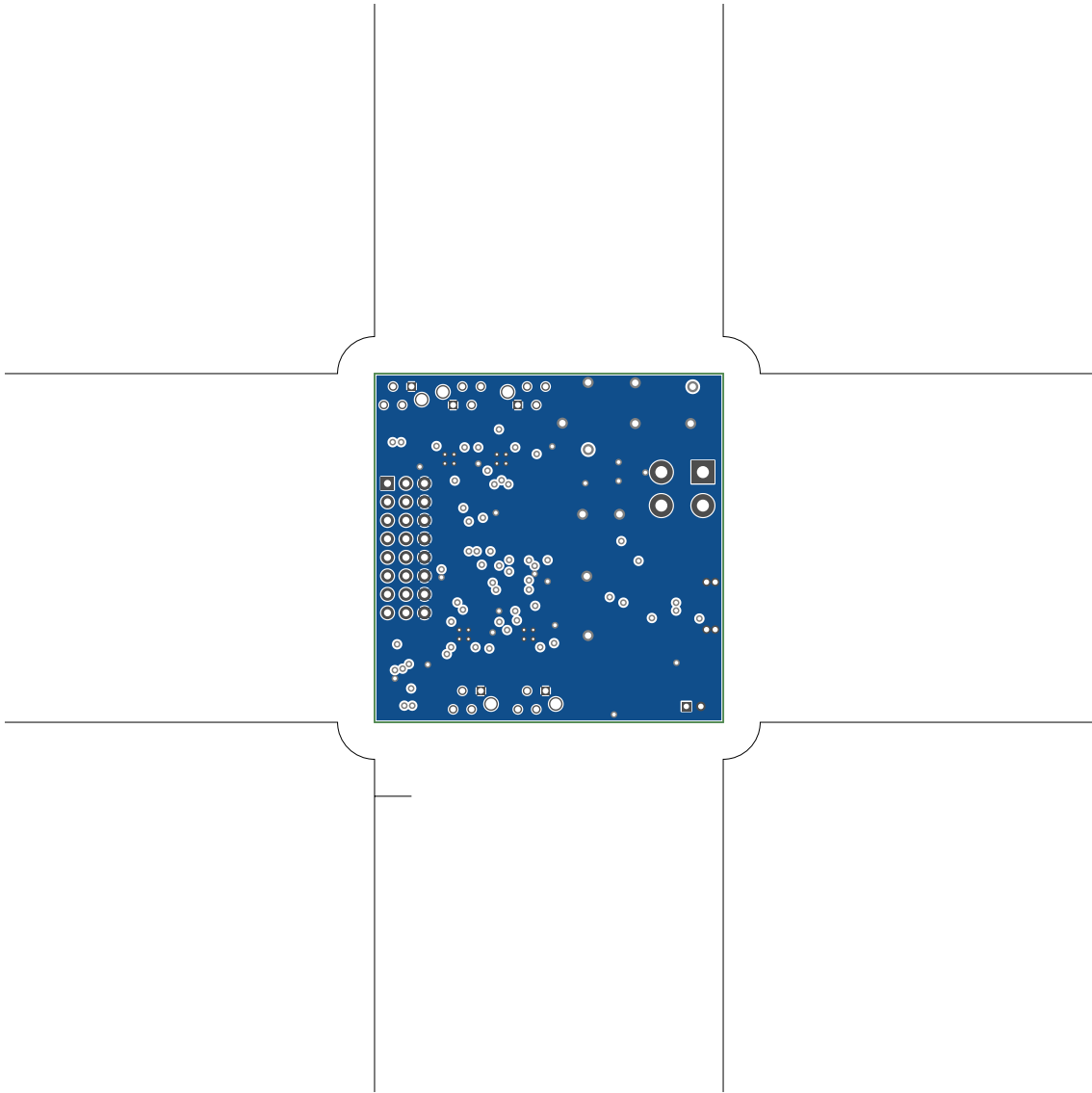
1. Table of Contents (This Page)

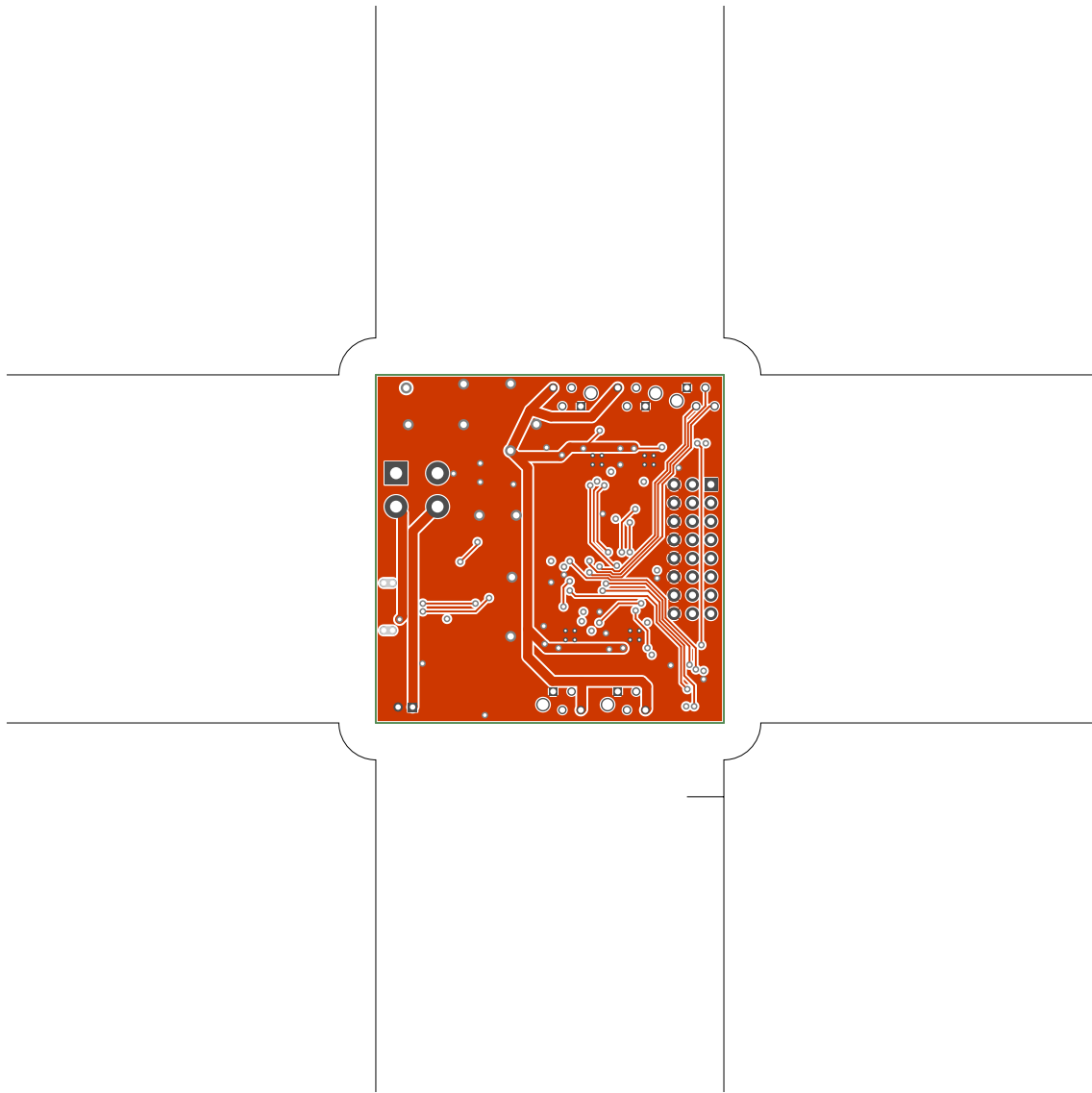
Created on Thu Jan 30 15:40:03 2020

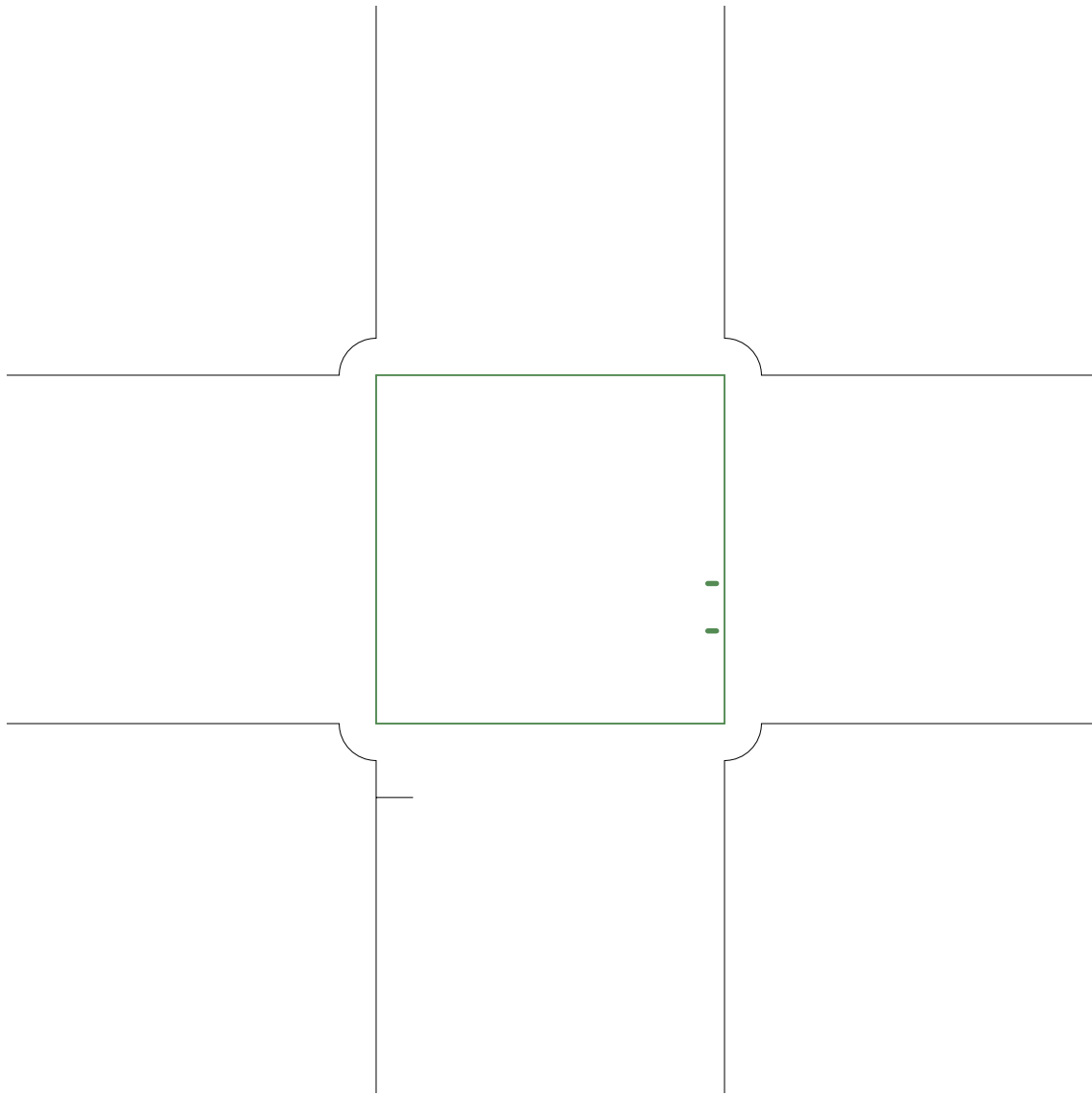
2. top
3. vcc
4. gnd
5. bottom
6. outline
7. plated-drill
8. componentmask
9. soldermask
10. topsilk
11. bottomsilk
12. toppaste
13. bottompaste
14. topassembly
15. bottomassembly
16. fab

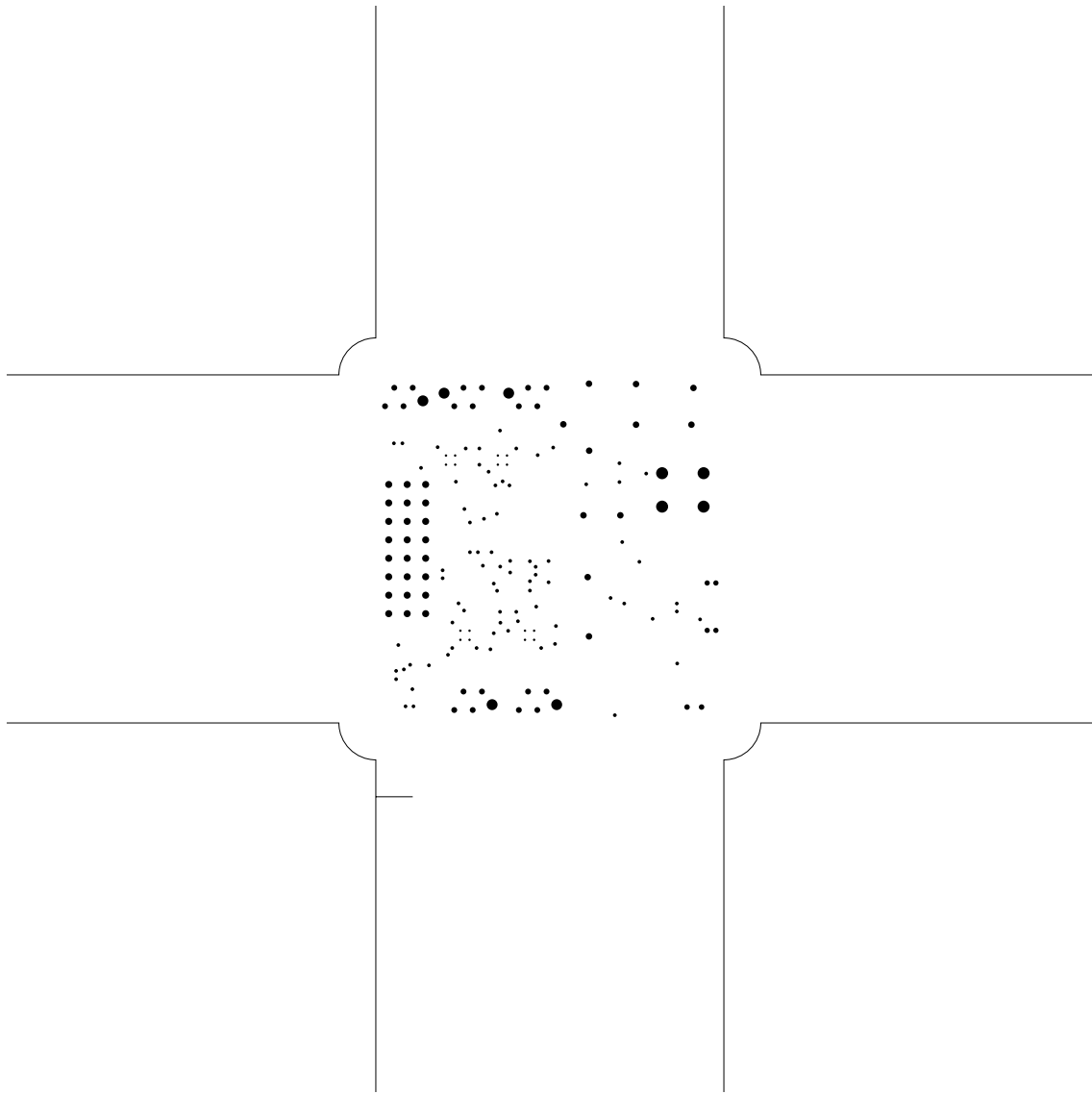


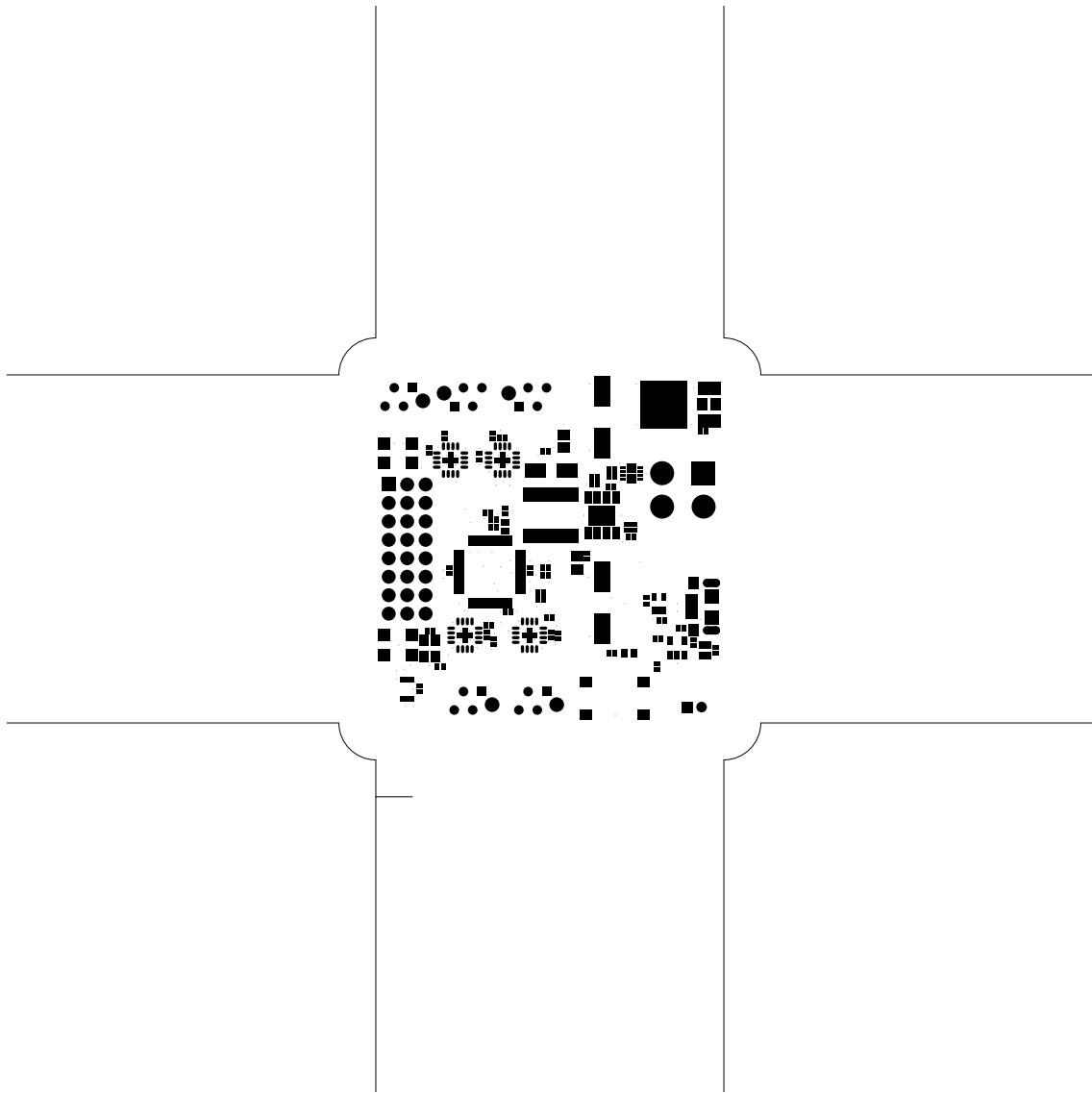


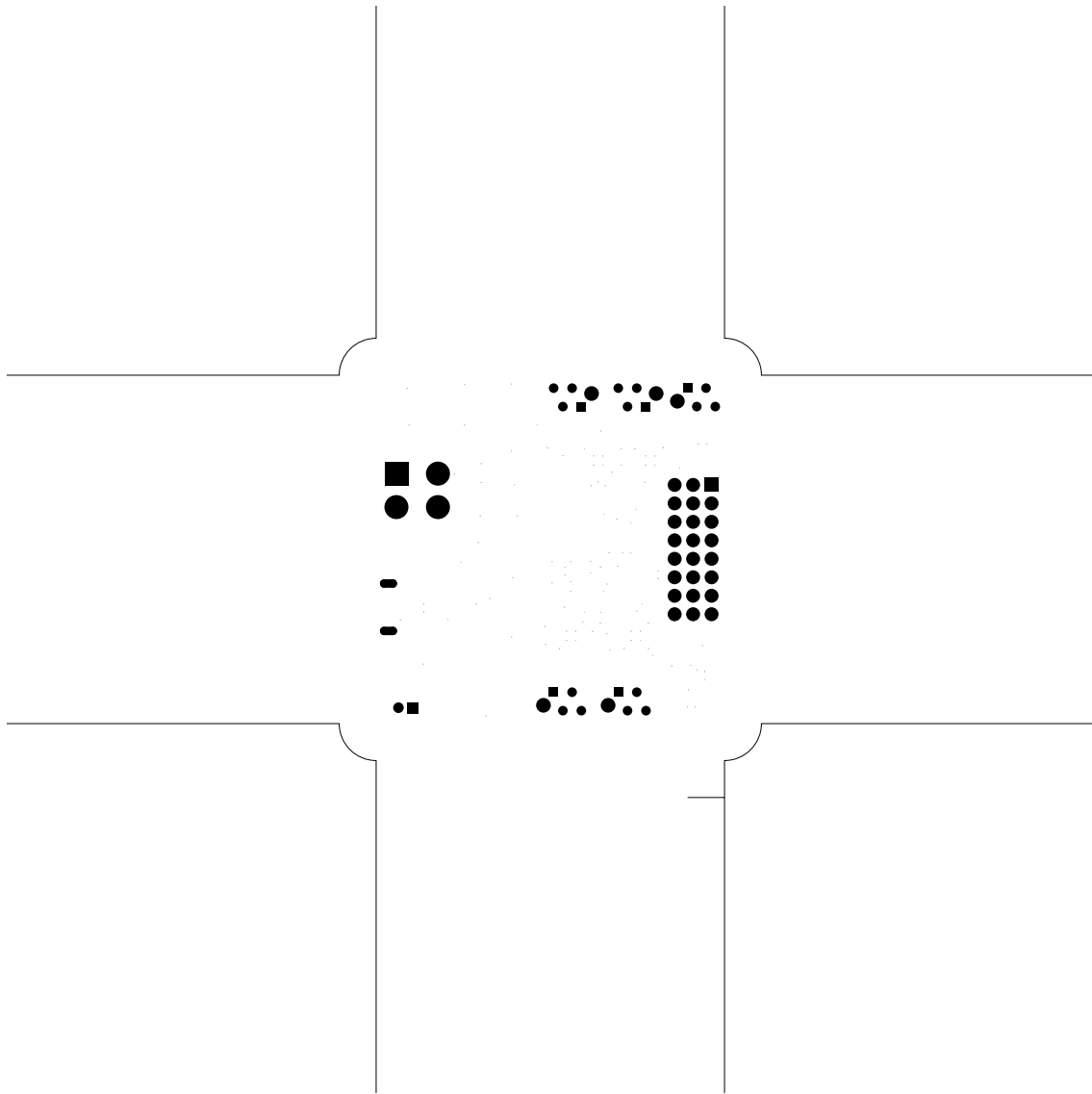


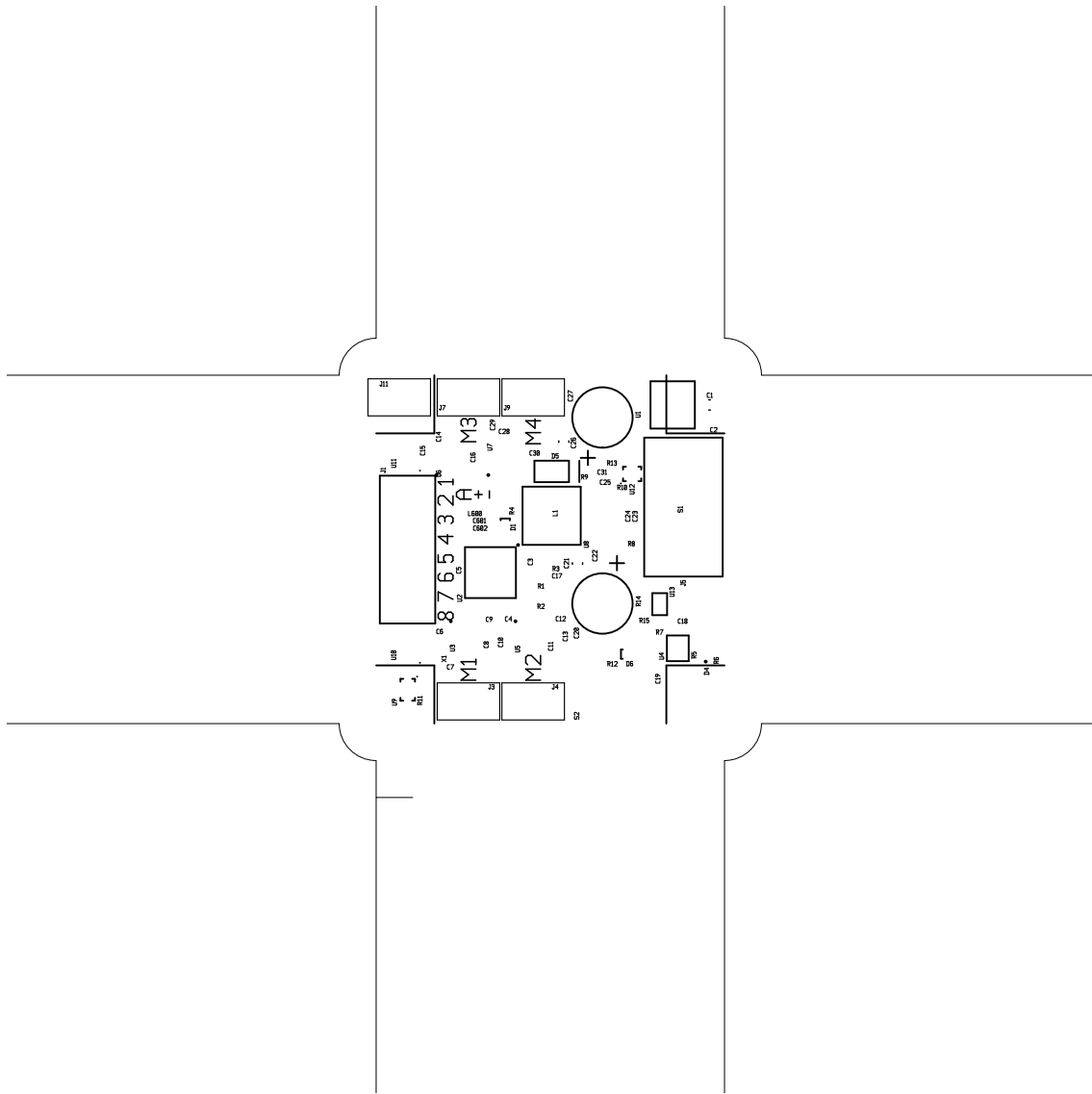








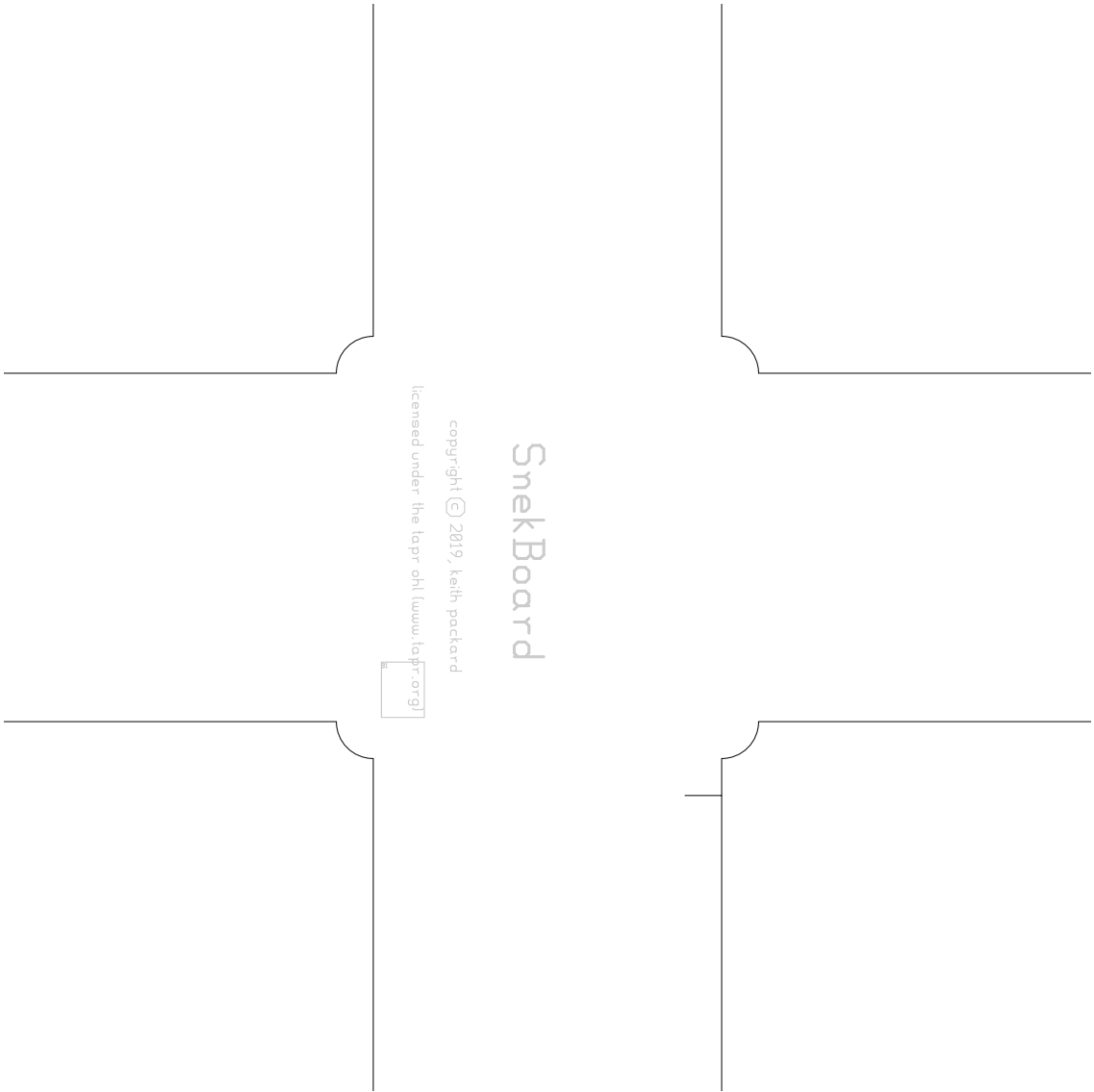


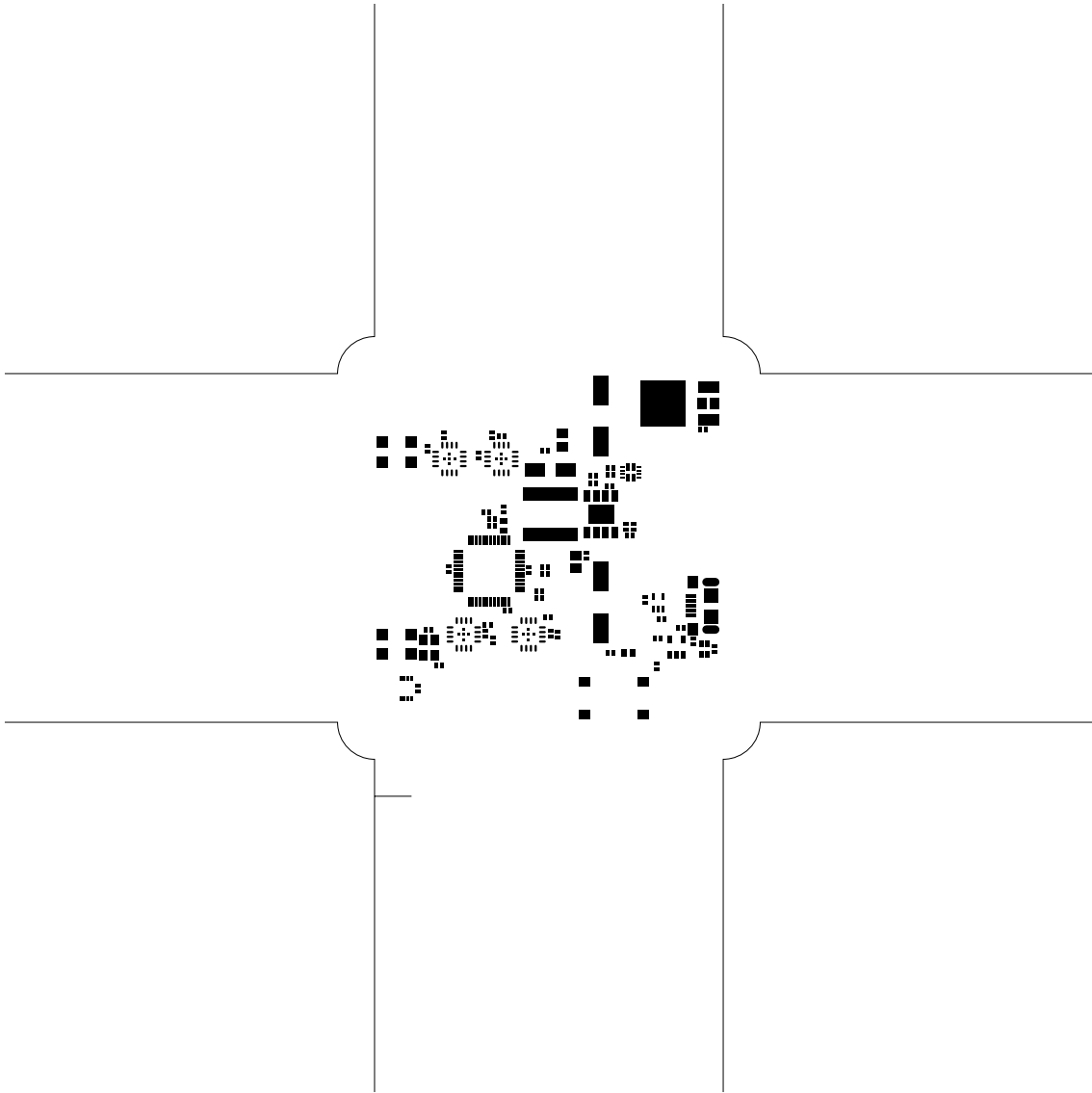


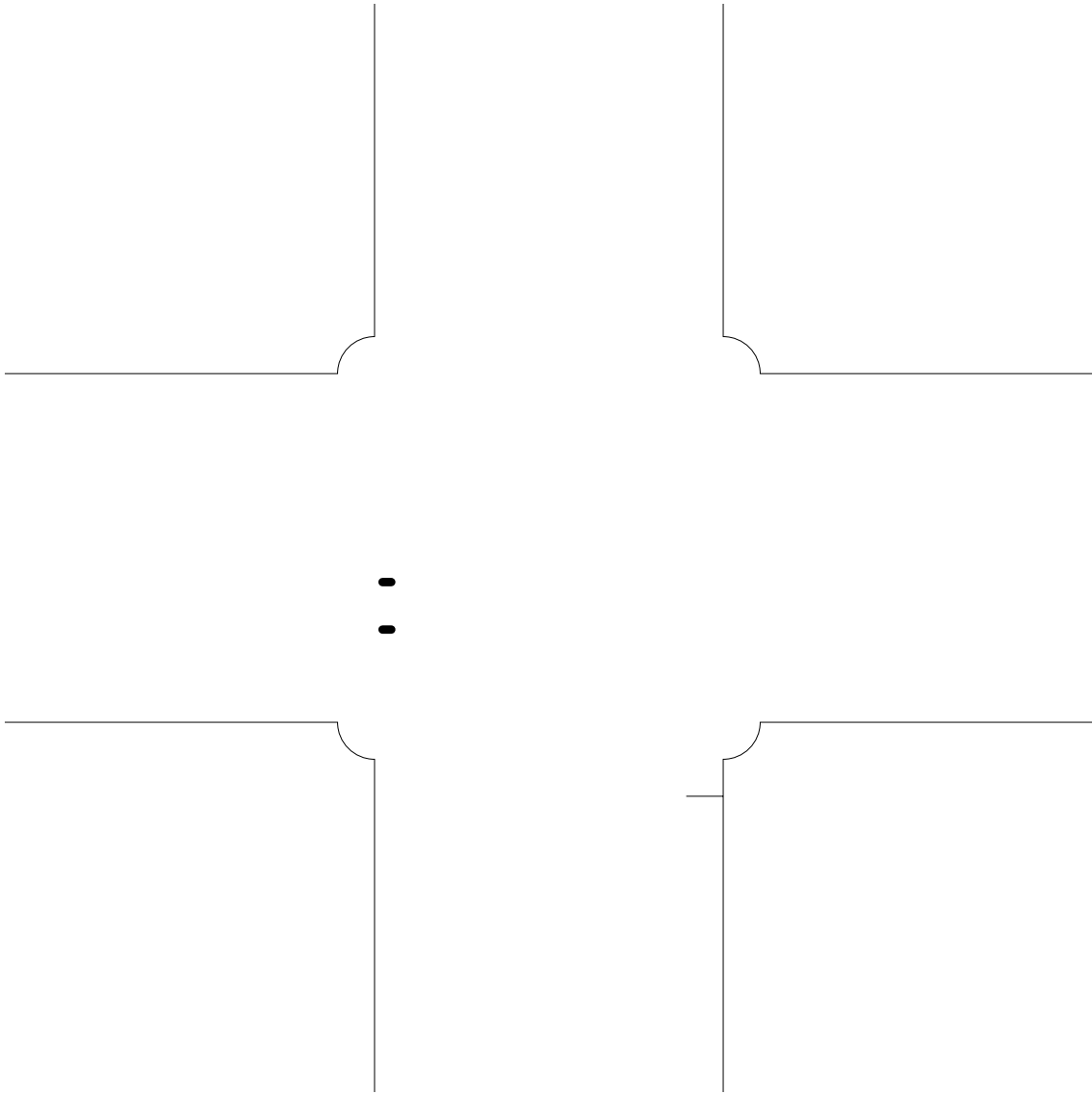
SnekBoard

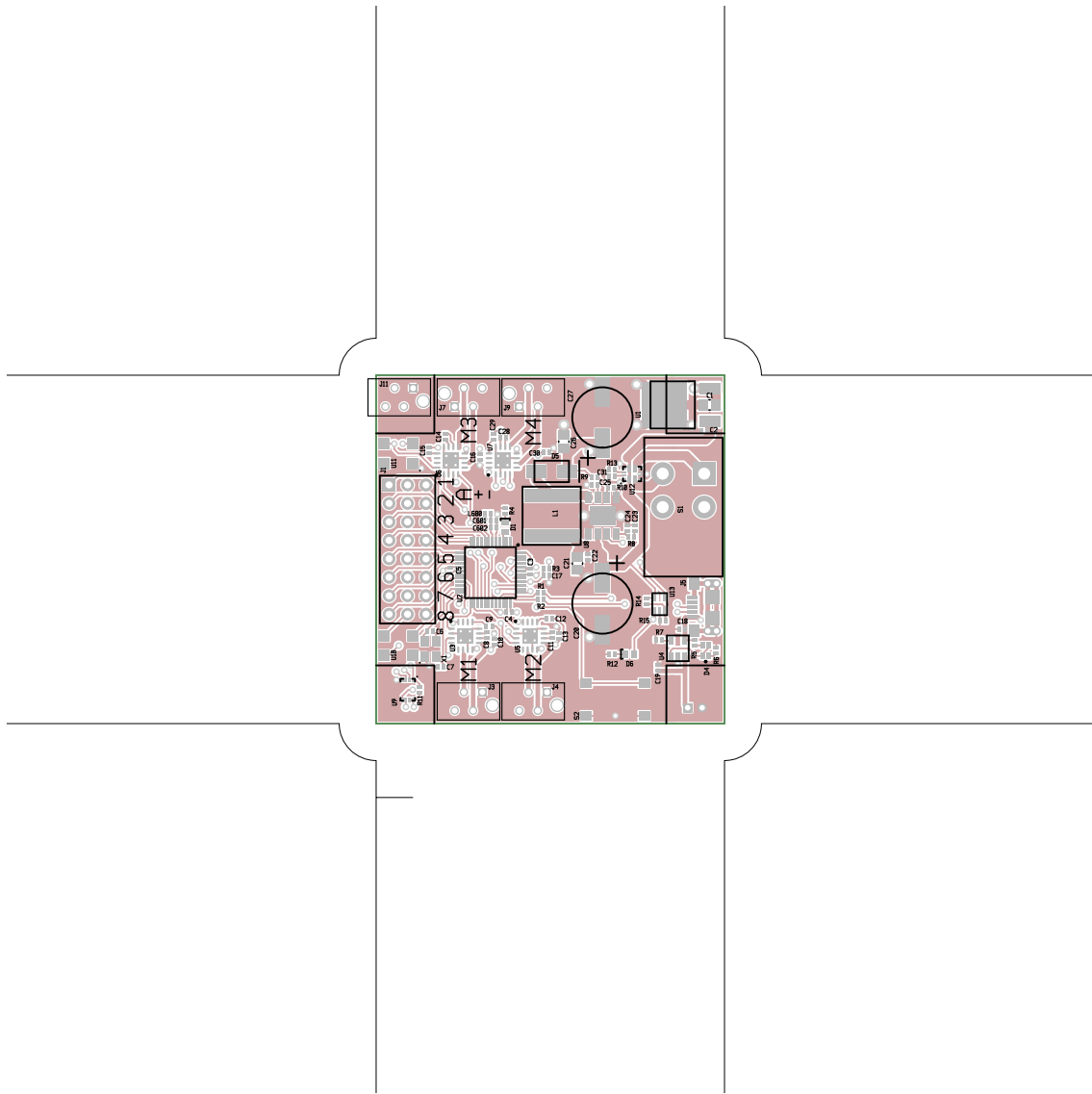
copyright © 2019, Keith Packard

licensed under the [tapr-oh! \(www.tapr.org\)](http://www.tapr.org/)

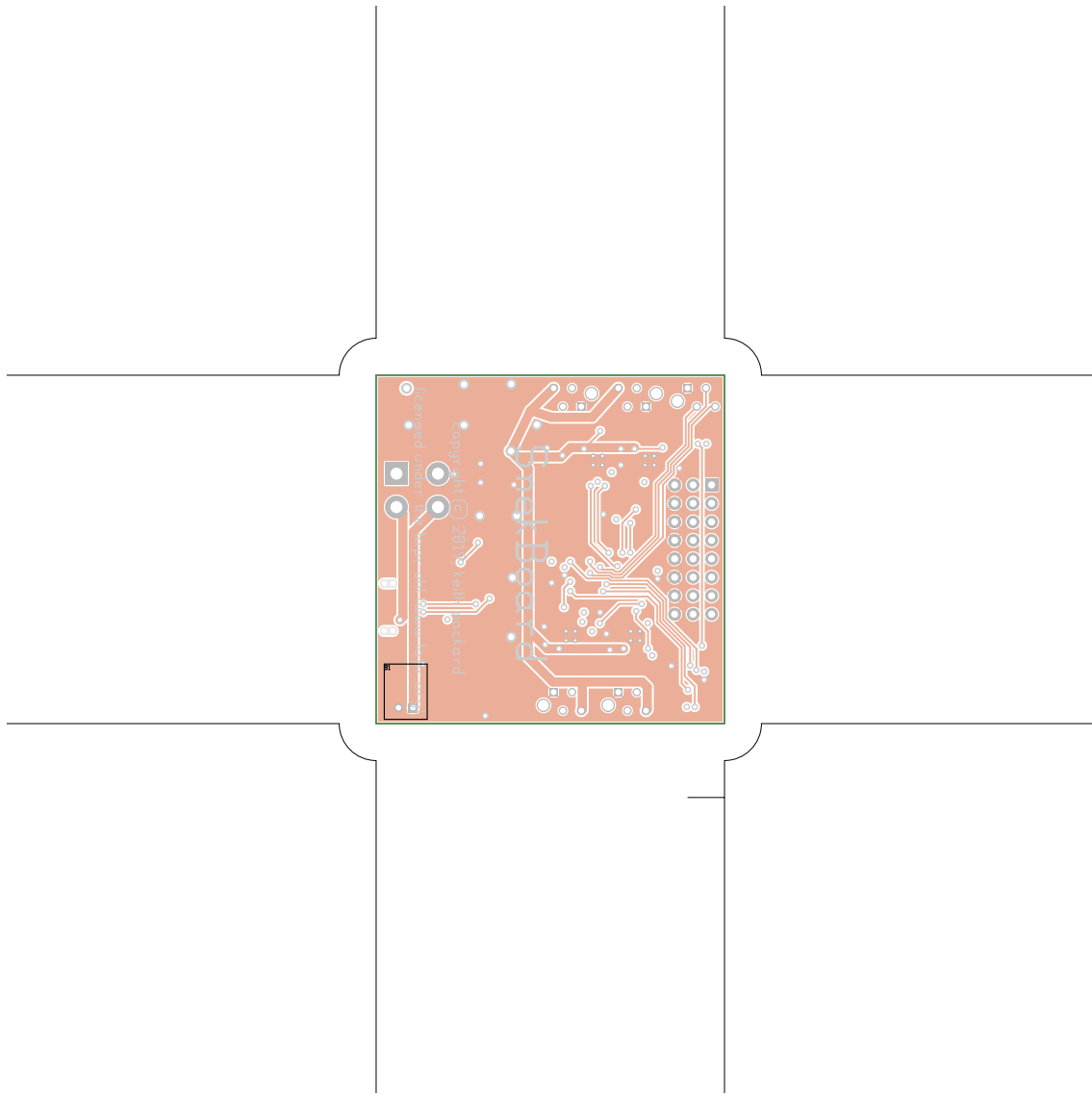








SnekBoard, topassembly, scale = 1:1.000
snekboard.pcb

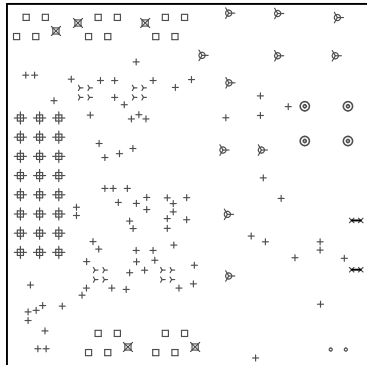


SnekBoard, bottomassembly (mirrored), scale = 1:1.000
snekboard.pcb

There are 9 different drill sizes used in this layout, 164 holes total

Symbol	Diam. (Inch)	Count	Plated?
γ	0.013	16	YES
+	0.020	78	YES
x	0.028	4	YES
o	0.030	2	YES
□	0.032	20	YES
∇	0.035	11	YES
⊕	0.038	24	YES
⊗	0.059	5	YES
⊙	0.065	4	YES

Title: SnekBoard - Fabrication Drawing
 Author: Keith Packard
 Date: Thu Jan 30 23:40:03 2020 UTC



Board outline is the centerline of this path